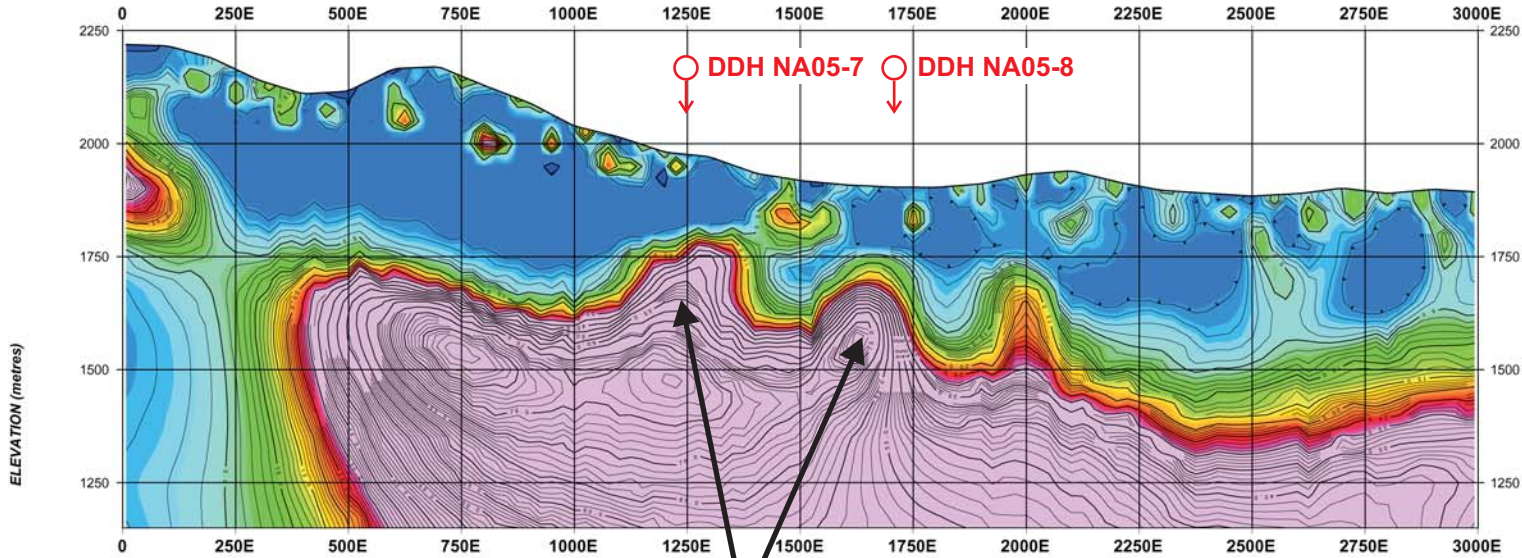
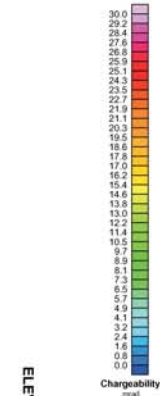


LINE 2N - UNCONSTRAINED (SHARP MODEL) UBC 2D IP INVERSION

**OTMC North Anomaly**



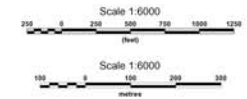
**High chargeability  
(Boulder Batholith-  
porphphy copper  
molybdenum)**



**SURVEY SPECIFICATIONS:**  
 Quantec TITAN-24 Distributed Array System  
 Coordinate System: Array Coordinates  
 Dipole Spacing: 100 meters Array Pole-dipole  
 Operators: GGI - J. Cross + B. Burke  
 Transmitter: ZERO GGT-30 (32 kW) + ZMG-30

**PROCESSING HISTORY:**  
 Data Acquisition: Full Waveform Sampling (120 samples/s)  
 Time-Series Processing: Robust Statistics  
 Processing Platform: GGI Quicklay(tm)  
 Inversion: Unconstrained Sharp UBC 2D IP

**PLOTTING PARAMETERS:**  
 Grid Cell Size: 25 metres  
 Gridding: Minimum Curvature Gridding  
 Filter Applied: 2X Hanning Filter  
 Contours: Linear (1 & 5 mrad)  
 Colour Zoning: Equal Area (Colour:Rb)



Q.T. Mining Corporation
<b>Ruby Project</b>
Jefferson County, near Delta, Montana
<b>TITAN-24 ARRAY DC RESISTIVITY/IP SURVEY</b>
LINE 2N
Unconstrained Sharp UBC 2D IP Inversion
Survey Date: June, 2004
Designed & Processed by Quantec Consulting Inc.

