

MMI RESPONSE RATIOS

KitCarson_No_Clay_MMI_Samples

AuRR_AgRR

- 2 - 5
- 6 - 10
- 11 - 20
- 21 - 30
- 31 - 344

Permitted_DH_May2006

Layer

- Previously Permitted drill site
- Proposed New drill site

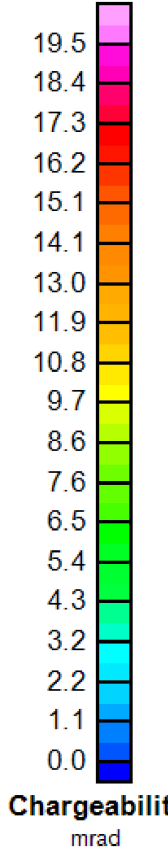
Layer

- 55346; 55408; 55432; 55445; 55455; 55462; 55468
- Fugro Airborne Automatic Gain Control Mag Lows

Drill-Permit-6May2006.dwg Polyline

Layer

- road-constructed
- road-need-upgrading
- road-okay
- road-proposed
- Bernice Research Natural Area



SURVEY SPECIFICATIONS:

Quantec TITAN-24 Distributed Array System
 Coordinate System: UTM Coordinates
 Dipole Spacing: 100 metres (300ft) metres Array: Pole-dipole
 Operators: QGI - JCross + BBurke
 Transmitter: ZERO GGT-25 (25 kW)+ ZMG-20

PROCESSING HISTORY:

Data Acquisition: Full Waveform Sampling (480 samples/s)
 Time-Series Processing: Robust Statistics
 Processing Platform: QGI Quicklay(tm)
 Inversion: Unconstrained Smooth UBC 2D IP

PLOTTING PARAMETERS:

Grid Cell Size: 50 metres
 Gridding: Minimum Curvature Gridding
 Filter Applied: 2X Hanning Filter
 Contours: Linear (1 & 5 mrad)
 Colour Zoning: Equal Area (Colour.tbl)

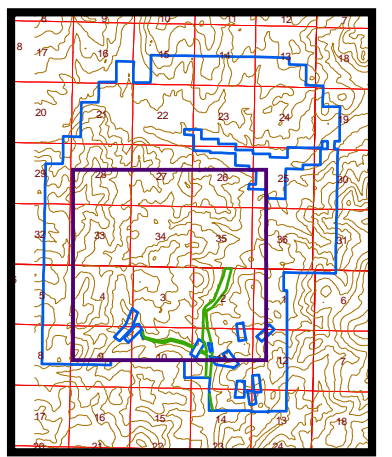
Map generated by
 Paul E. Fredericks, Mineral Logic
 1839 Frey Lane, Missoula, Montana
 (406) 542-2354

KC-AuAgRR-SmoothIP-100m-4Jun06.PRN

PROJECTION INFORMATION

NAD 1983 UTM Zone 12N
 Transverse Mercator
 False Easting: 500,000.000000
 False Northing: 0.000000
 Central Meridian: -111.000000
 Scale Factor: 0.999600
 Latitude of Origin: 0.000000
 Coordinate Display: meters

Scale 1:12,000



Ruby Project Reference Map



RUBY PROPERTY

Jefferson County, Montana
 (www.otmining.com)

KIT CARSON AREA
Proposed Drill Sites,
Kit Carson Grid MMI AuRR+AgRR,
Fugro Airborne Geophysics - AGC Magnetic Lows,
with Titan 24 Smooth IP at 100m depth

May 2006