

386,000m.E.

390,000m.E.

5,120,000m.N.

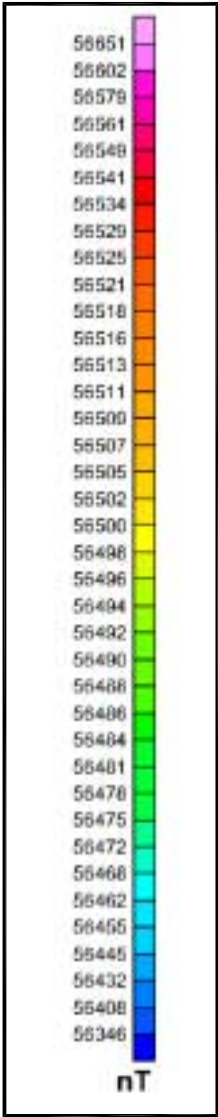
5,116,000m.N.

Limits of Chlorite/Biotite Alteration Zone

O.T. Mining Corp.
Claims Outline

U/G Levels

Other Patented Mining Claims



Legend:

- Ruby claims outline
- Other patented/unpatented claims
- Fault
- Vein
- Limits of chlorite/biotite alteration zone

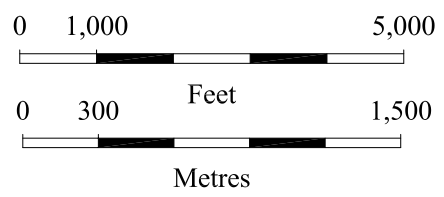


Figure 12.

O.T. MINING CORPORATION

RUBY PROPERTY
 Jefferson County, Montana, U.S.A.
Automatic Gain Control Image
 (Highlighting Shallow Features)