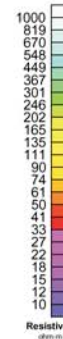
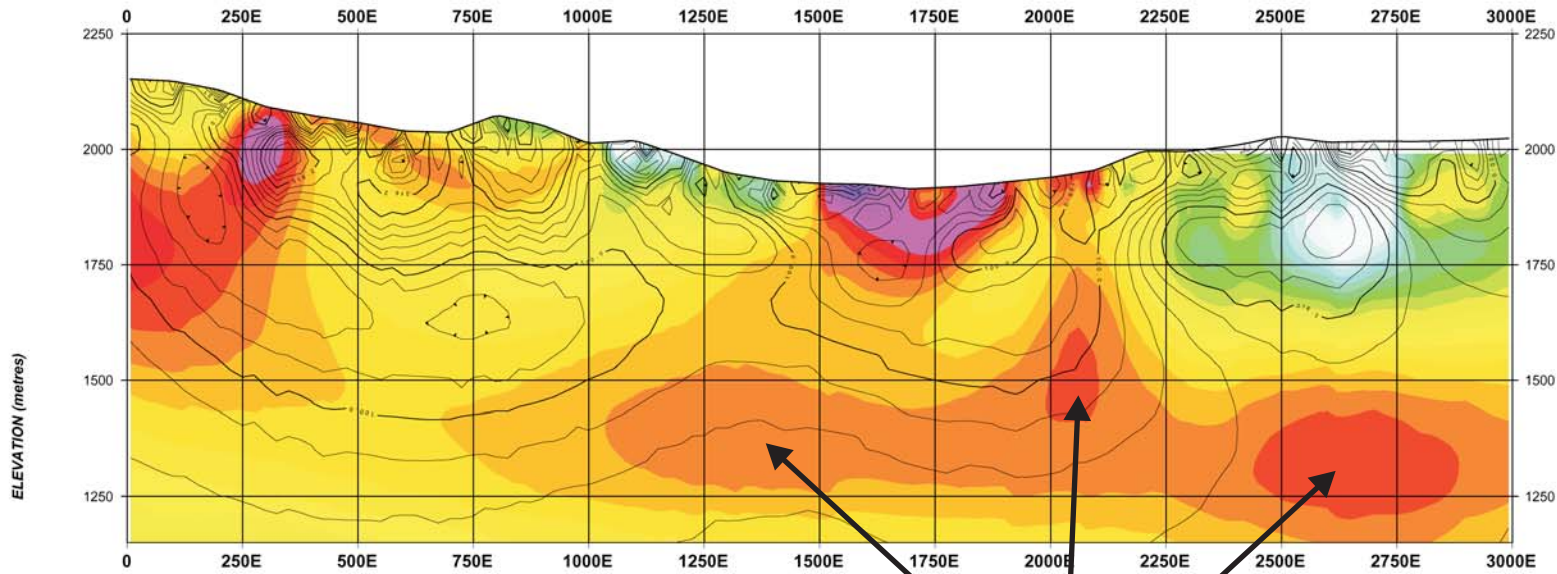


LINE 1N - UNCONSTRAINED (SHARP MODEL) UBC 2D DC INVERSION

OTMC Ruby Property



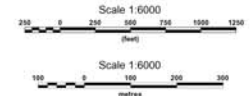
ELEVATION (metres)

SURVEY SPECIFICATIONS:
 Quantec TITAN-24 Distributed Array System
 Coordinate System: Array Coordinates
 Dipole Spacing: 100 meters Array: Pole-dipole
 Operators: OGI - J. Cross & B. Burke
 Transmitter: ZERO GGT-30 (32 kW) + ZMG-30

PROCESSING HISTORY:
 Data Acquisition: Full Waveform Sampling (120 samples/s)
 Time-Series Processing: Robust Statistics
 Processing Platform: OGI Quicklay(tm)
 Inversion: Unconstrained Sharp UBC 2D DC

PLOTTING PARAMETERS:
 Grid Cell Size: 25 metres
 Gridding: Minimum Curvature Gridding
 Filter Applied: 2X Hanning Filter
 Contours: Logarithmic (10 levels/dec)
 Colour Zoning: Equal Area (Resis.Bt)

**Low resistivity
 (sulphide mineralization
 in Boulder Batholith)**



O.T. Mining Corporation
Ruby Project
Jefferson County, near Butte, Montana
TITAN-24 ARRAY DC RESISTIVITY SURVEY
LINE 1N
Unconstrained Sharp UBC 2D DC Inversion
Survey Date: May, 2004
Surveyed & Processed by
Quantec Consulting Inc.

DRG # A-394DCP-PLDP-INV-QUBC2D-DC-RES-1N